

# PARTS LIST

BCGX35H-01

## CONTENTS

1. MAIN BODY .....	1 ~ 2
2. GEARCASE .....	3 ~ 4
3. ACCESSORIES .....	5 ~ 6
ENGINE(GX35NT_ST3)	

ENGINE:GX35NT ST3

2016. 11.

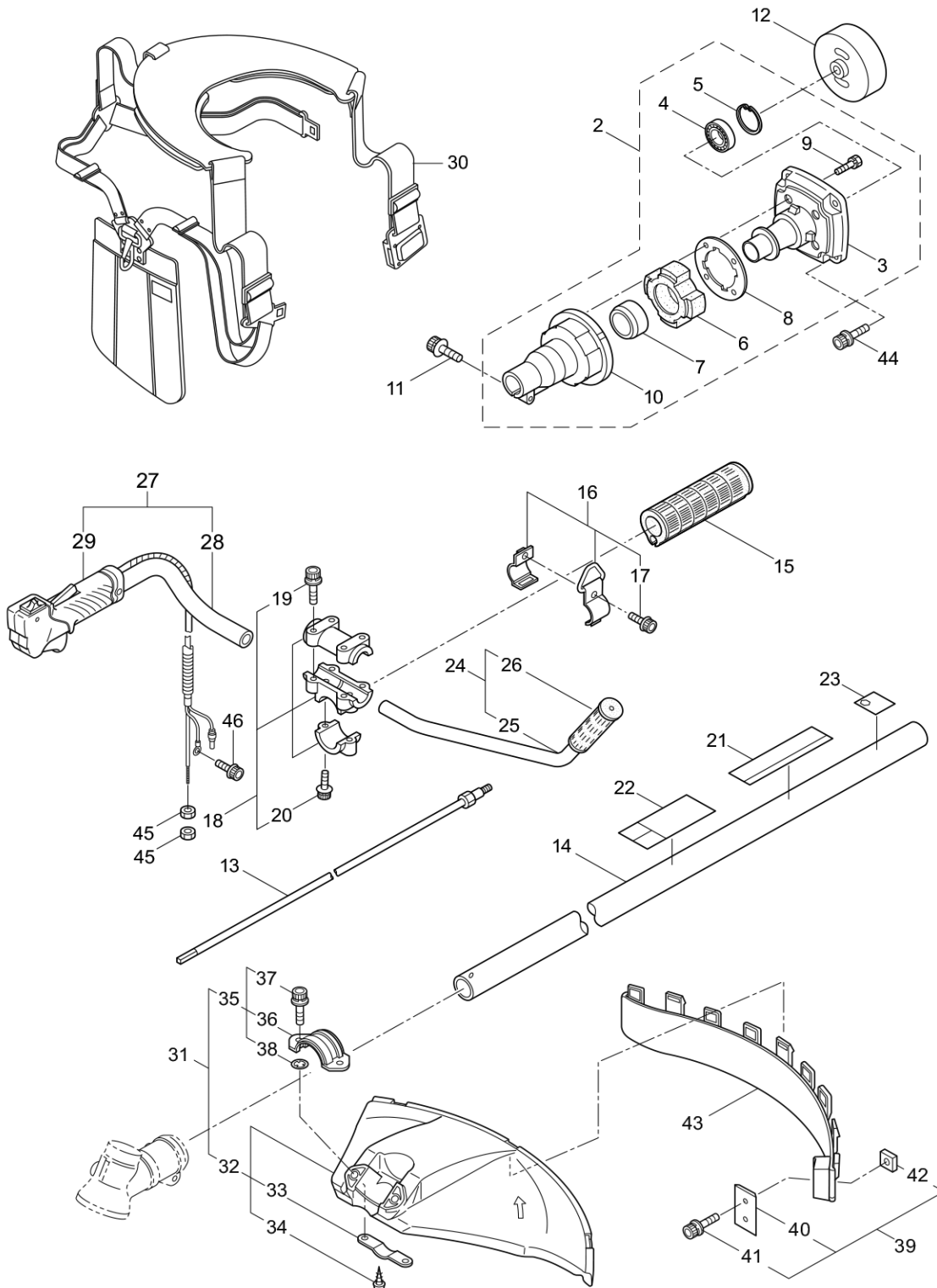


**MARUYAMA**

P/N 523812-1

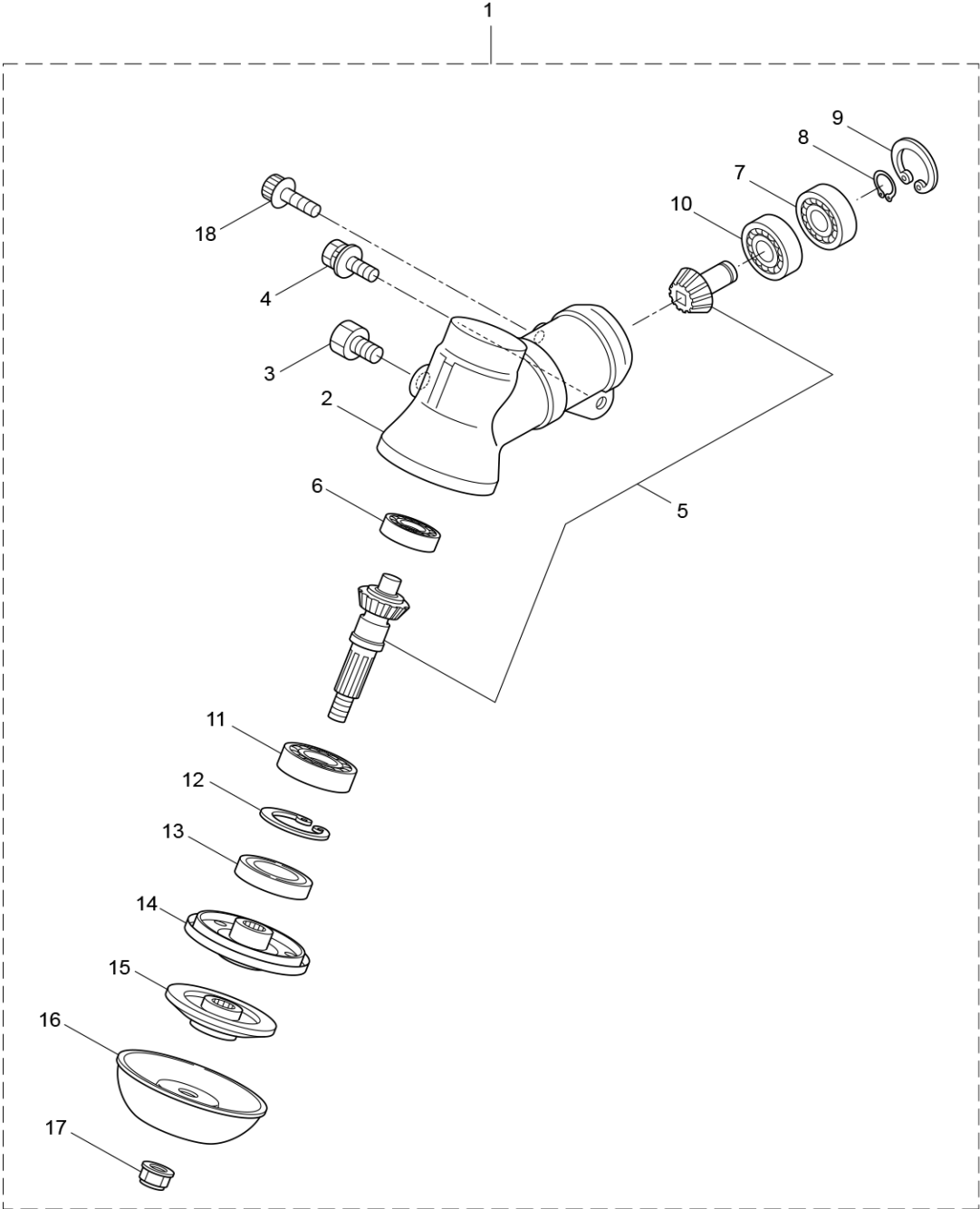


1. BCGX35H-01  
MAIN BODY



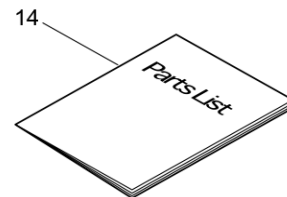
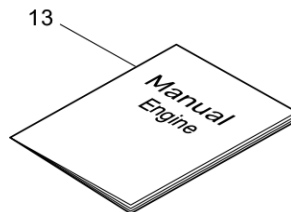
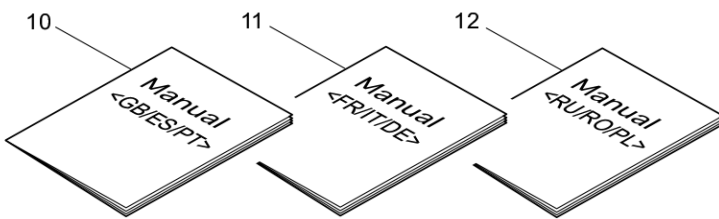
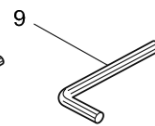
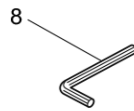
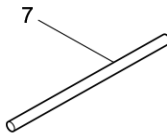
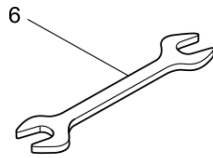
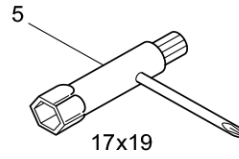
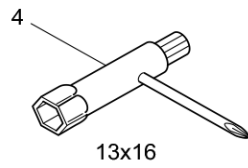
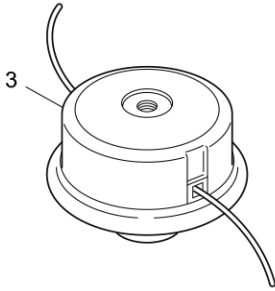
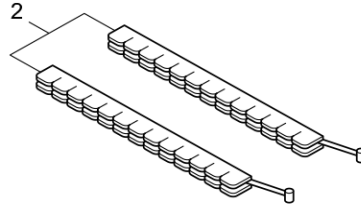
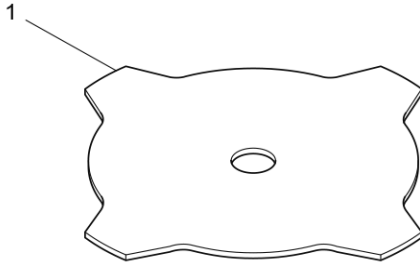
Status	Position	Parts Number	Parts Name	Unit Quantity	Set Unit Quantity	Specification	Remarks	Maker code
	1	364145	BCGX35H-01	1				
	2	222543	CLUTCH CASE ASSY	1			Incl.3-10	
	3	222544	HOUSING	1		78 #6201ZZ 1口		
	4	012649	BEARING 6201ZZ	1		#6201ZZ	#6201ZZ	
	5	016732	SNAP RING	1	5	アソウ32	#32	
	6	217045	BUFFER	1				
	7	217046	BUFFER	1				
	8	217047	WASHER	1		ワル74		
	9	092033	SCREW	4	10	M5X15	M5x15	
	10	222370	ADAPTOR	1		26.2		
	11	217134	BOLT	1		M6X30	M6x30	
	12	222546	CLUTCH DRUM ASSY	1		78XM8		
	13	222522	DRIVE SHAFT ASSY	1				
	14	220800	OUTER ASSY	1		26.2 BC420(AMA)		
	15	215239	GRIP	1		(26)		
	16	231883	HANGING BRACKET ASSY	1		(26)アソウボルト	Incl.17	
	17	261762	SCREW	1		M5X14	M5x14	
	18	232129	BRACKET ASSY	1		ワル26	Incl.19,20	
	19	217138	BOLT	4		M6X25	M6x25	
	20	217134	BOLT	2		M6X30	M6x30	
	21	226889	NAME PLATE	1		BCGX35H	BCGX35H	
	22	223188	CAUTION MARK	1		CEマーク		
	23	228043	LABEL	1		112DBA		
	24	226501	HANDLE ASSY A	1		EOタイフ	Incl.25,26	
	25	226502	HANDLE A	1		15.9XT1.2EOタイ フ		
	26	226503	GRIP	1		(16)カ		
	27	232169	HANDLE B ASSY	1		EOタイフ	Incl.28,29	
	28	223714	HANDLE	1		(15.9)スリットアソウ		
	29	232166	THROTTLE LEVER ASSY	1		SWアソウ16/M6 オネジ		
	30	228086	NEW LARK SHOULDER HARNES	1				
	31	232092	SAFETY COVER	1		アソウケソウ CEア 42	Incl.32-38	
	32	231262	SAFETY COVER	1		アソウケソウ CEア 42	Incl.33,34	
	33	237364	THREADED BRACKET	1		42 ヨウ		
	34	221580	SCREW	1	10	トラス 2ソウ ヨビ 4X8	4x8	
	35	232093	BRACKET	1		カインレタイア	Incl.36-38	
	36	223179	BRACKET	1				
	37	220632	CAP SCREW	2		M6X30	M6x30	
	38	231704	WASHER	2		6X13XT1.0 ナチワ ル	6x13xt1.0	
	39	231882	CUTTER ASSY	1		リョウバノフラット	Incl.40-42	
	40	230747	CORD CUTTER	1		リョウバノフラット		
	41	261250	CAP SCREW	1	5	M5X20	M5x20	
	42	228325	SQUARE NUT	1		M5		
	43	230748	EXTENSION	1		ワンアソウ アカリノナシ		
	44	219113	CAP SCREW	4		M6X20	M6x20	
	45	261878	NUT	2	5	M6 3ソウ	M6	
	46	215993	CAP SCREW	1		M5X10	M5x10	

2. BCGX35H-01  
GEARCASE



Status	Position	Parts Number	Parts Name	Unit Quantity	Set Unit Quantity	Specification	Remarks	Maker code
	1	234837	GEAR CASE ASSY	1		M10ネジ/6かアナキ	Incl.2-18	
	2	232850	GERA CASE	1		キヨカカ`タ/26		
	3	234109	BOLT	1	5	M8X8	M8x8	
	4	217134	BOLT	1		M6X30	M6x30	
	5	234349	GEAR SET	1		55° /06.1 14:19		
	6	014490	BEARING 6000	1		#6000	#6000	
	7	106933	BEARING 6000Z	1		#6000Z	#6000Z	
	8	014210	SNAP RING	1	5	シ`クヨウ10	#10	
	9	054676	RING SNAP	1	5	アヲヨウ26	#26	
	10	014490	BEARING 6000	1		#6000	#6000	
	11	012544	BEARING	1		#6202	#6202	
	12	012380	SNAP RING	1		アヲヨウ35	#35	
	13	232049	OIL SEAL	1		D21355	D21355	
	14	232322	BRACKET A	1				
	15	232052	BRACKET B	1				
	16	230849	NUT COVER	1		T1.5		
	17	232920	NUT	1		M10X1.25 ヒタ`リ	M10x1.25	
	18	217135	BOLT	1		M6X10	M6x10	

3. BCGX35H-01  
ACCESSORIES



Status	Position	Parts Number	Parts Name	Unit Quantity	Set Unit Quantity	Specification	Remarks	Maker code
	1	054751	4 TEETH BLADE (10)	1		255 ｽﾙｯﾌﾟｲﾝｻｯ	255x4	
	2	220534	BLADE COVER	1		ﾋﾄｸﾐ		
	3	234899	SEMI AUTO HEAD(L) 4 INCH	1		ﾀﾞｲｱﾄｯﾌﾟ M10ｽﾃｯｼﾞ		
	4	222400	BOX SPANNER	1		13X16X(+ﾄﾞﾗｲﾊﾞ	13x16x(+)	
	5	228008	BOX SPANNER	1		17X19X(+ﾄﾞﾗｲﾊﾞ	17x19x(+)	
	6	054756	DOUBLE ENDED SPANNER	1		10X13	10x13	
	7	212300	LEVER HANDLE	1		6X100L	6X100L	
	8	219432	WRENCH	1		ﾆﾓﾝﾊﾞ 4	4mm	
	9	219433	WRENCH	1		ﾆﾓﾝﾊﾞ 5 ｲﾆｯﾁ	5mm	
	10	236782	INSTRUCTION MANUAL	1		3ｶｺｸﾞ GB/ES/PT	GB/ES/PT	
	11	236783	INSTRUCTION MANUAL	1		3ｶｺｸﾞ FR/IT/DE	FR/IT/DE	
	12	236787	INSTRUCTION MANUAL	1		3ｶｺｸﾞ RU/RO/PL	RU/RO/PL	
×	13	232186	INSTRUCTION MANUAL	1		GX25/GX35	Engine	
	14	523812	PARTS LIST	1		BCGX35H-01	BCGX35H-01	